

Organised by
BRITISH JOURNAL OF
**HOSPITAL
MEDICINE**

In association with



The 3rd national conference

Autism Today

An essential conference for all
professionals working with individuals
with autistic spectrum disorder

Manchester Conference Centre,
University of Manchester

Wednesday 26th and
Thursday 27th November 2008

DAY 1: Diagnosis, management and treatment

DAY 2: Sharing strategies and secrets for success in education

CPD APPROVED



MA HEALTHCARE LIMITED

40 YEARS OF MEDICAL EDUCATION



MA EDUCATION LIMITED

Objectives

Autism is still a relatively unknown disability but affects over 500,000 families throughout the UK. **Autism Today** will bring together leading experts from the education and medical fields to discuss the central issues and practical management of both Autism and Asperger's syndrome.

It is anticipated that participants will benefit from:

- An update on diagnosing Autistic Spectrum Disorder (ASD)
- An opportunity to learn about managing ASD
- The latest developments in treatment
- Productive approaches to education
- The secrets to success from leading educationalists within in the field
- An opportunity to debate and discuss the central issues with leading practitioners

Who should attend?

Day one of the conference is more relevant to those in the **medical** profession whilst day two has an **education** slant; however both days will prove interesting and informative to all who work within the field.

Day one will be of particular interest to:

- Neurologists
- General Practitioners
- Specialists in Psychiatry
- Specialists in Psychology
- Professionals in the field of learning disabilities
- Autism Professionals
- Health Visitors
- Speech Therapists
- Occupational Therapists
- Researchers
- Paediatricians

Day two will be of particular interest to:

- Educational professionals in specialist schools working with ASD
- Educational professionals in main stream schools teaching children and adolescents with ASD
- Educational assistants in main stream and specialist schools working with children or adolescents with ASD
- Paediatricians
- Specialists in Psychology
- Autism Professionals
- Professionals in the field of learning disabilities

Wednesday 26th November 2008

Diagnosis, management and treatment

09.00 – 09.25 **Registration and refreshments**

09.25 – 09.30 **Welcome and introduction**

Dr Jack Tinker

Editor-in-Chief, *British Journal of Hospital Medicine*

SESSION ONE: EPIDEMIOLOGY AND PATHOLOGY

Chair: Professor Andrew Pickles

Professor of Epidemiological and Social Statistics, University of Manchester

09.30 – 10.00 **The autistic spectrum: definitions, diagnoses and assessment**

Professor Ann Le Couteur

University of Newcastle upon Tyne

10.00 – 10.25 **Cognition and autism**

Professor Andrew Pickles

Professor of Epidemiological and Social Statistics, University of Manchester

10.25 – 10.50 **Imaging studies**

Professor Declan Murphy

Professor of Psychiatry and Brain Maturation, Institute of Psychiatry, London

10.50 – 11.10 **Refreshments and exhibition viewing**

SESSION TWO: ASSOCIATED ISSUES

Chair: Professor Ann Le Couteur University of Newcastle upon Tyne

11.10 – 11.30 **Co-Morbidity**

Dr Paramala Santosh

Consultant in Developmental Neuropsychiatry and Psychopharmacology, Institute of Psychiatry, London

11.30 – 12.15 **The social brain in autism**

Dr Chris Ashwin

University of Cambridge

12.15 – 12.35 **Pharmacotherapies**

Dr Paramala Santosh

Consultant in Developmental Neuropsychiatry and Psychopharmacology, Institute of Psychiatry, London

12.35 – 13.00 **Panel discussion**

All morning speakers

13.00 – 13.45 **Lunch and exhibition viewing**

SESSION THREE A: MANAGING AUTISM AND ASPERGER'S SYNDROME

Chair: Professor Amanda Kirby Discovery Centre, University of Wales, Newport

13.45 – 14.10 **School issues and ASD**

Professor Gillian Baird

Consultant Development Paediatrician, Newcomen Centre, Guys Hospital, London

14.10 – 14.35 **Where else should we be looking for ASD?**

Professor Maurice Place

Professor of Child and Family Psychiatry, Northumbria University

14.35 – 15.00 **Working with children and young people with ASD in the school years**

Dr Glenys Jones

Autism Centre for Education & Research, University of Birmingham

15.00 - 15.20 **Refreshments and exhibition viewing**

SESSION THREE B: MANAGING AUTISM AND ASPERGER'S SYNDROME

Chair: Professor Gillian Baird Consultant Development Paediatrician, Newcomen Centre, Guys Hospital, London

15.20 – 15.45 **Coping with puberty and sexuality**

Lynne Moxon

Chartered Psychologist, ESPA

15.45 – 16.10 **Managing transitions**

Adolescence to adulthood: a life approach

Professor Amanda Kirby

Discovery Centre, University of Wales, Newport

16.10 – 16.45 **Panel discussion**

All afternoon speakers

16.45 **Close of meeting**

Thursday 27th November 2008

Sharing strategies and secrets for success in education

Chair: **Mike Collins** Head of Education Services, The National Autistic Society, Bristol

08:30 – 08.55 Registration and refreshments

08.55 – 09.00 Welcome and introduction

09.00 – 09.45 Keynote address

A tool kit for life: an innovative approach to the waking day curriculum

Robert Hubbard

Principal, Priors Court

09.45 – 10.15 Universal teaching and learning strategies that work

Lynn Plimley

Lecturer in ASDs, Autism Centre for Education and Research,
School of Education, University of Birmingham
and Educational Advisor to Autism Cymru

10.15 – 11.00 An introduction to SPELL

Mike Collins

Head of Education Services, The National Autistic Society, Bristol

11.00 – 11.30 Refreshments and exhibition viewing

11.30 – 12.00 Parent – teacher partnership

Linda Redford

Director of Development and Public Affairs, The Treehouse Trust

12.00 – 12.30 The way from A to B: using wise choices to manage challenging behaviour

Mike Stanton

Special Needs Teacher, George Hastwell School, Cumbria

12.30 – 13.00 Designing environments for children and adults with ASD

Christopher Beaver

Senior Partner, GA Architects, London

13.00 – 13.30 Questions and panel discussion

13.30 – 14.15 Lunch and exhibition viewing

14.15 – 15.45 Workshops

A: Communication, interaction and social skills

Fatima Agrela

ABA Consultant, The Treehouse Trust

B: Overcoming challenges faced when teaching young people with Asperger's Syndrome

Ronnie Young

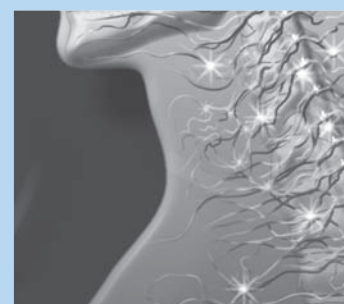
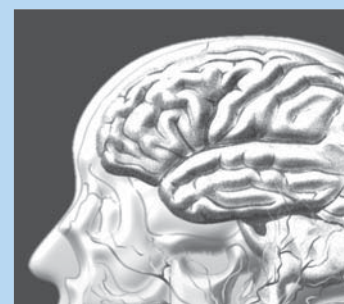
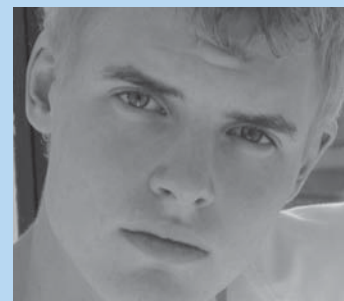
Education Consultant, "Neomorphosis", South London

C: Planning for access and inclusion

Lynn Plimley

Lecturer in ASDs, Autism Centre for Education and Research,
School of Education, University of Birmingham
and Educational Advisor to Autism Cymru

15.45 Close of meeting



3 EASY WAYS TO BOOK



Complete and return the registration form overleaf



0207 501 6762



www.mahealthcareevents.co.uk

Organised by

BRITISH JOURNAL OF
**HOSPITAL
MEDICINE**

In association with

early years educator
eye
The only weekly magazine for early years

five to seven educator
5to7
www.fivetoseven.co.uk

SecEd
The only weekly voice for secondary education

MA
AH
MA HEALTHCARE LIMITED

MA
AE
MA EDUCATION LIMITED

Registration form

I would like to secure my place at
The 3rd national conference Autism Today

PHOTOCOPIES OF THIS FORM ACCEPTED

Title (Dr, Mr, Mrs etc):

Forenames

Surname

Job title

Contact address

.....

.....

..... Post code

Telephone

Email

I understand that this registration booking is subject to the booking conditions.

Signature

DELEGATE RATES

Please tick the box as applicable

Consultants and GPs

Two days £558.13 incl. VAT

One day £440.63 incl. VAT (Wed 26th Thurs 27th)

Junior Doctors, Nurses, Specialist Registrars and all educationalists

Two days £440.63 incl. VAT

One day £323.13 incl. VAT (Wed 26th Thurs 27th)

Please select a workshop from the following options:

A: Communication, interaction and social skills

B: Overcoming challenges

C: Planning for access and inclusion

The conference fee includes:

- Entrance to the conference
- Lunch and refreshments
- Full conference documentation
- Certificate of accreditation/attendance

I WISH TO PAY BY:

• Credit card

Please debit my Visa Mastercard Maestro
 American Express

Card no

Valid from Expiry date

ISSUE NO (Maestro cards only) 3 digit security code

Signed..... Date

• Call the Credit Card Booking Hotline 0207 501 6762

• Book online at www.mahealthcareevents.co.uk

• Make your cheque payable to MA Healthcare Ltd

• Invoice

Requesting an invoice and signing this form will secure your place at the conference. All invoices must be paid in full before the event. See booking condition 5.

To receive an invoice you must complete this section in full giving either your work or Trust address. We are unable to send out invoices to home addresses

PLEASE COMPLETE IN FULL WITH CONTACT NAME IF DIFFERENT FROM ABOVE

Contact

Full invoice address

.....

.....

..... Post code

Telephone

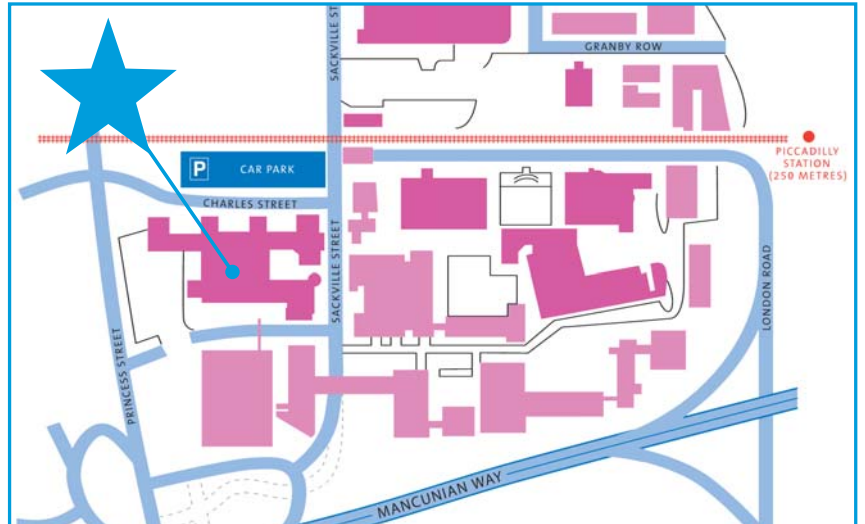
Fax

Signed

PLEASE RETURN TO:
MARK ALLEN GROUP, AUTISM TODAY MANCHESTER,
FREEPOST BFH1 337, LONDON, SE24 9BR
FAX BOOKING LINE: 0207 733 8174
TEL BOOKING LINE: 0207 501 6762

How to get to the venue

Manchester Conference Centre, University of Manchester,
Weston Building, Sackville Street, Manchester M1 3BB



Accommodation details

Expotel can provide a complimentary hotel booking service for delegates attending *The 3rd national conference Autism Today*.

To enquire about making a reservation or to get details of other hotels contact Expotel on the number below, choose the 'hotel' option and quote MA Healthcare/ The 3rd national conference Autism Today.

EXPOTEL Telephone number: 0141 331 1771 Fax number: 0141 331 1117
Email: gres@expotel.com

Booking conditions

MA Healthcare Ltd (The Company) accepts bookings under the following conditions:

- 1 All correspondence will be sent to the participants at the address specified on the booking form or over the telephone. (This address will also appear on the official participant's list given out at the event).
- 2 The completed booking form together with full payment must be sent to MA Healthcare Ltd. A confirmation will then be issued. Cheques should be made payable to **MA Healthcare Limited**. Returning the signed registration form constitutes a firm booking.
- 3 Bookings may be made by telephone but payment must be made in full by credit card.
- 4 All payments, including credit card, must be in sterling.
- 5 The Company reserves the right to cancel a booking if payment is not made six weeks prior to the conference taking place. Any outstanding payment becomes the responsibility of the signatory made on the reservation form.
- 6 Payment for any booking made within six weeks of the conference will still be due to the company irrespective of whether the delegate attends.
- 7 Should you be unable to attend, a substitute delegate may take your place. Notification must be received in writing one week prior to the conference.
- 8 The Company reserves the right to change the conference speakers in cases of illness or other conditions beyond its control.
- 9 The Company does not accept responsibility for loss or damage to delegates' own property and/or personal effects caused by events beyond its control, including (but without limitation) fire, flood, strikes, civil disturbances or for consequential loss or damage of any kind whatsoever.
- 10 Speakers approached at time of print.

Cancellation of booking

Written cancellations received six weeks prior to the conference will be accepted and a refund of 90% of the booking charge will be made. After this date, no refunds can be given. Verbal cancellations will not be accepted.

If written cancellation is not received six weeks prior to the conference full payment will still be due irrespective of whether the delegate attends the conference.



Organised by
BRITISH JOURNAL OF
**HOSPITAL
MEDICINE**

MA Healthcare Ltd,
St. Jude's Church, Dulwich Road, London SE24 0PB
Website: www.mahealthcareevents.co.uk
Tel: 0207 501 6762 Fax: 0207 733 8174